

Figure 3 Basilicata Main Hydraulic Infrastructures









- | | | | | | |
|---|-----------------------------------|---|---------------|--|-------------|
|  | water pipeline |  | Bradano Basin |  | Agri Basin |
|  | under construction water pipeline |  | Basento Basin |  | Sinni Basin |
|  | open channel |  | Cavone Basin |  | Noce Basin |

Figure 1: Geographical Framework



BASILICATA REGION - Southern Italy

Figure 2: Basilicata catchment basins



Interregional River Basin Authority of Basilicata

Figure 4: Volumes supplied for multiple uses in Basilicata and Apulia Regions

Multiple uses hydraulic schemes with reservoirs	Volumes
Sinni-Agri Scheme: Monte Cotugno, Pertusillo, Gannano, San Giuliano, Sarmento reservoirs	550x10 ⁶ m ³ /y
Camastra Scheme: Camastra reservoir	46.5 x 10 ⁶ m ³ /y
Basento – Bradano Scheme: Trivigno, Acerenza, Gannano reservoirs	86.4 x 10 ⁶ m ³ /y (future availability)
Springs Supplied Schemes	Volumes
Basento-Camastra, Agri, Frida, Torbido-Maratea schemes	1593.67 l/s = 3.15 x 10 ⁶ m ³ /y
Volumes annually transferred to Apulia Region for drinking water, industrial and agriculture uses:	280 x 10 ⁶ m ³ /y (2005)

Figure 5: Minimum Vital Outflow values
in the main rivers of
Interregional River Basin Authority of Basilicata

River	Section	Minimum Vital Outflow (cm/s)
Bradano	Acerenza	Q=0.005
	Genzano	Q=0.00045
	Ponte Colonna	[0.005-0.100] Q=0.01
	Basentello	[0.002-0.100] Q=0.002
	San Giuliano	[0.02-0.08] Q=0.02
	Tavole Palatine	[0.01-0.150] Q=0.029
Basento	Pignola	[0.019-0.356] Q=0.021
	San Vito	[0.020-0.500] Q=0.021
	Trivigno	1 solo ramo con Q=0.1-0.2
	Gallipoli	[0.090-1.2] Q=0.094
	Camastra	[0.020-1.12] Q=1
	Menzena	[0.070-0.5] Q=0.078
Cavone	Misegna	Q=0.005
	Madonna del Pantano	Q=0.023
Agri	Le Tempe	[0.20-090] Q=0.37
	Grumento	[0.40- 1.90] Q=0.52
	Tarangelo	[0.50-2.00] Q=1,00
	Agri weir	Q=0.75
	Sauro weir	Q=0.055
	Dannano weir	Almeno un ramo con L=4.75m e Q=0.7
Sinni	Cogliandrino	Q=0.200
	Pizzutello	[0.1500-0.800] Q=0.394
	Monte Cotugno	[0.200-0,7] Q=0.6
	Sarmento weir	Q=0.160
	Valsinni	Almeno un ramo con L=6.75m e Q=0.450
	Santa Laura	Q=1.1
Bradano	Acerenza	Q=0.005
	Genzano	Q=0.00045
Noce	La Calda	Q=0.33
	Le Fornaci	Q=1.33

Figure 6: Bradano river hydraulik risk areas (an example)

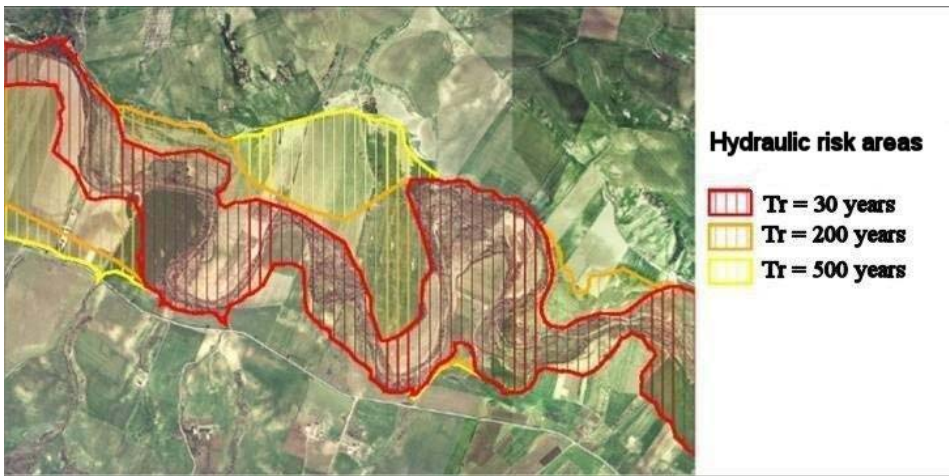
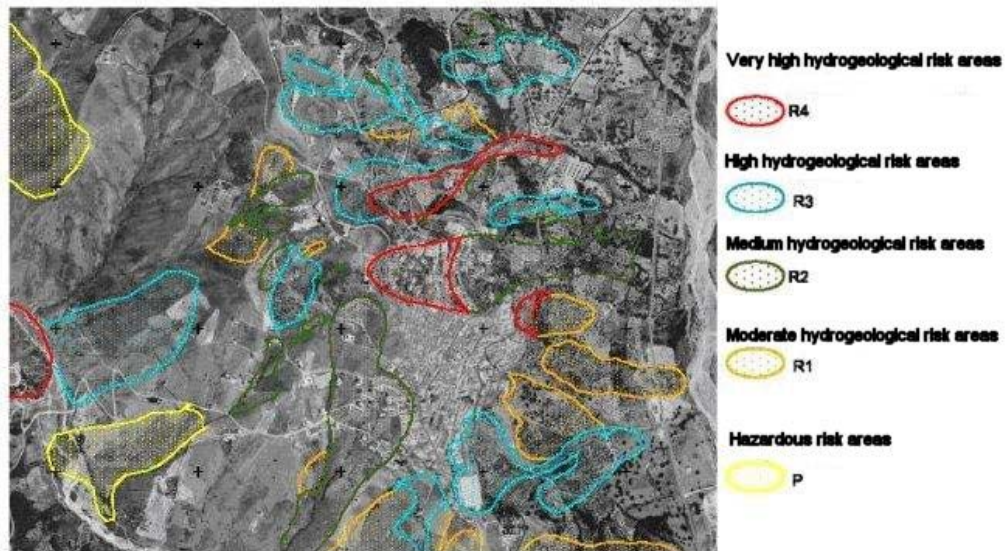


Figure 7: Hydrogeological risk areas in Basilicata (an example)



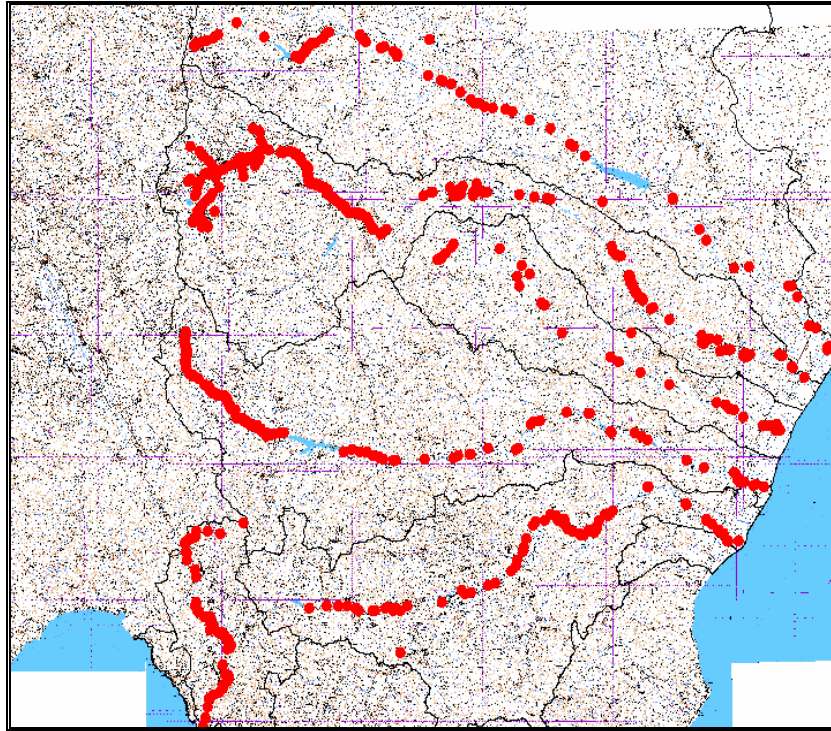


Figure 8: Hydraulic Police – Surveyed sections